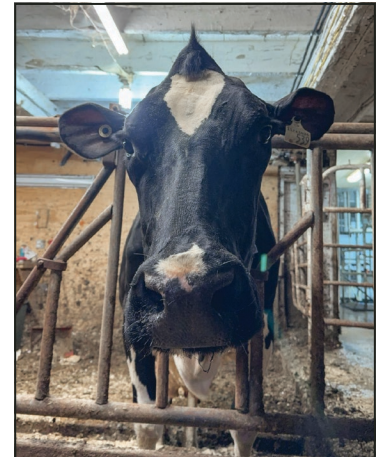


celebrating Longevity

Holstein Canada - promoting Longevity, Profitability & Efficiency!



Danny, Alison, Yvonne, John.



Polled and Bold HAMMINGVIEW SACHEL MILI P

Tars Cheema

Fresh at Christmas with her 11th calf (a heifer via sexed semen), MILI P fits the pattern of many longevity cows – first to the parlour, no-fuss and not noticed. The oldest cow in the barn, with nearly 143,000kg of milk and 5645kg fat lifetime in 10 lactations, EX-91 6E Mili has earned everybody's respect. What's more special is that she traces back six generations to the first EX cow carrying the Hammingview prefix for Cor and Mickie Hamming, soon after they began farming on their own in Pitt Meadows in 1980.

Some Background

Cor and Mickie's daughter Yvonne and husband John bought the entire dairy farm operation in 2005, continuing the family legacy together with their adult children – Alison and Danny. Breeding great cows remains a focus for this two-time Master Breeder herd that's placed sires in AI. Now it's the mother-daughter team who enjoy doing all the 'cow stuff' together – milking, breeding, classifying, etc., while the guys do all the feeding, cleaning, mechanical and field work.

They milk 100 cows 2x in a double-8 herringbone parlour, though they did 3x for five years only to facilitate sharing in the kids' school sports years.

Sand bedding has been used effectively for 20 years, helping to maintain herd SCC well under 80,000.

They utilize all the breed improvement tools – registering, classifying, milk recording and Alison wants to do more genomic testing on the heifers after a five year pause. They have used primarily sexed semen and beef, but they are swinging back towards making more replacements now.

Mili Makes Money

"She's always eating at the bunk," says Alison. "She's not a mean boss cow, but she's confident and not scared of anyone," adds Yvonne. They agree Mili has a separation attitude and will protest while in the comfortable transition pen. "She's a tough cow that wants to be with the herd."

Mili scores 92 on dairy strength, which Yvonne recalls consistent with her dams. Width, depth, capacity with dairyness are the family stamp.

"She's a big cow, her feet aren't pretty, but she never had trouble until she got old," Yvonne shares. Annual trimming keeps her sound.

Fertile

Mili's calving interval and breeding history show a cow who is remarkably fertile. Ten calving intervals averaged 12.9 months!

"She has calved 11 times, seven times needed just one service. 19 services in total for 11 calves – 1.8 services on average," Alison does the math. Sexed semen in her last two calvings brought her heifer count up to five.

Production and Health

Mili has maintained BCAs right at herd average, though she responded to 3x milking with strong deviations over herd average. "She got back in calf too quick as a first calver and her second lactation was her lowest," Yvonne explained.

When it comes to udder health, Alison says, "She has had her struggles with mastitis – she's a fast milker, but usually clears on her own."

"She's been really healthy for years, but she's needed a little more TLC lately. She had a touch of pneumonia last lactation which hurt her milk a little," Yvonne said (Mili still made 249-279-260 BCAs). Calcium boluses are used at calving for third and later calvers, the oldest cows getting several, plus additional boxstall time.

Mili has calved on her own, or with the occasional easy pull (never a problem), which likely has played a part in her smooth transition back to the milking group year after year. She's been free of metabolic and reproductive diseases.

Longevity and Profitability from Pedigree

You can't deny Mili has a solid pedigree – 25 brood stars between her five dams! Her third dam, CHARLES MINUET VG-89 14*, was the matriarch who brought about the second Master Breeder shield. These five dams had decent longevity, from 3-6 lactations each, all good production cows with 88, 89, 90 and EX 3E classifications.

Mili's dam – a VG-88 Ashlar was a "beautiful cow with a deep, wide frame – we lost her too young because she was too fast milking," Yvonne recalls. "We had really high hopes for her long term!" Over 16,500kg at 4-03 in 305d, she averaged 313-322-331 BCAs in three lactations.

Ashlar carried several crosses to both Chief Mark and Aerostar – dairyness/low

SCC and toughness with beautiful udders contributed by Formation.

The top side of Erbcrest Satchel's pedigree leads to Shottle, Oman and Mtoto – all longevity superstars. Satchel was the source of the polled gene through Lawn Boy-P, who also carries Rudolph, Aerostar and Manfred. Through Satchel's maternal side, we come across more Aerostar, Formation and Igniter – then two paths back to Glen Drummond

Shower – the tough, productive Enhancer of years past.

Between her feet and easy milking traits, Mili has not lived a perfect life, but she's determined to add to her lifetime totals living with the herd.

"It was all her. Her calm demeanor, will to live and strength through out, she is a tough cow that wants to be milked," Alison and Yvonne agree.



Simplify genomic testing for any breed through the Holstein Canada ConneXion app

Easily search for animals in your herd and link them to samples.

Submit genomic test requests with your registration for a simpler and faster process.

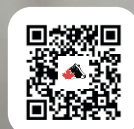
Track the progress of your samples from the time you ship them, to receiving results!



START STRONG FROM DAY ONE.

Bundle and Save:
Combine Registration and Genomics to save **\$4.00 per animal.**

The most cost-effective way to register and test your calves before three months of age.



TOBY KLEINSASSER
FSBP, Western Provinces
tkleinsasser@holstein.ca
519-865-4367

CONNEXION
WWW.HOLSTEIN.CA